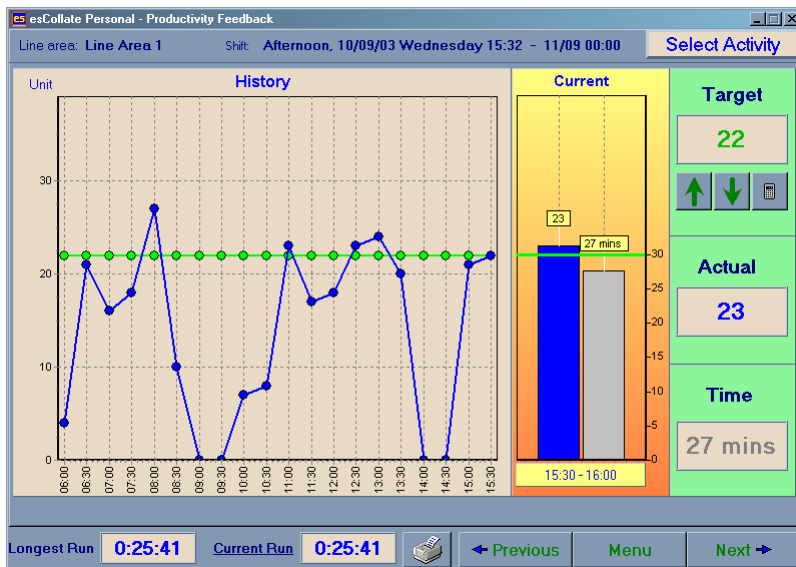
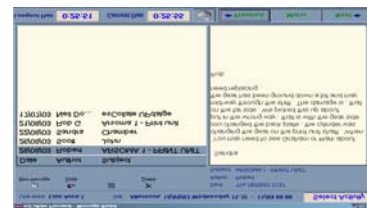


PROPHIT™ - MES

MANUFACTURING EXECUTION SYSTEM – REAL TIME INFORMATION



PROPHIT MES provides real time information from the shop floor **instantly**, focusing your people on improving the operations!



Prophit MES Productivity Feedback view – Instant Information. Other views supplied by the software include: Event Assignment, Event Analysis, Production Overview and Message Board.

PROPHIT - MES solution provides real time feedback from the shop floor to your scheduling and financial reporting systems – closing the real-time information loop.

Prophit - MES, features:

- Automatic data collection and operator feedback
- Displays Shop Floor schedules and work to lists.
- Pegs performance data to schedule information.
- Provides shop floor ability to compare, interrogate and predict performance from previous performance data.
- Clear simple message board, engages operator dialogue, facilitating knowledge sharing and knowledge management.
- Standard Operating Procedure database.
- Real time waste management.
- Instant visibility at the source (on the shop floor) ensures immediate response measures are invoked.

The Prophit™ Suite of software products is designed to meet all your Sales & Operation Planning requirements.

Prophit™ – AP&S

(Advanced Planning & Scheduling)

Prophit™ – Progress

Prophit™ – Forecast Manager

Prophit™ – Maintenance Manager

PROPHIT - MES has been designed to drive Continuous Improvement at the shop floor. With improvements owned by shop floor teams not just by management!

Get the most out of your operators, give them the feedback where & when they need it!

Contact us now to discuss how we can align your information systems to meet your business objectives by phone or email us on consult@strategicalliance.com.au

StrategicAlliance Consulting Services

“Putting your strategies to work”.

StrategicAlliance Consulting Services Pty Ltd
Suite 21, Building 7, 49 Frenchs Forest Rd, Frenchs Forest, NSW 2086
Telephone: (02) 8666 9060. Fax: (02) 8666 9057